

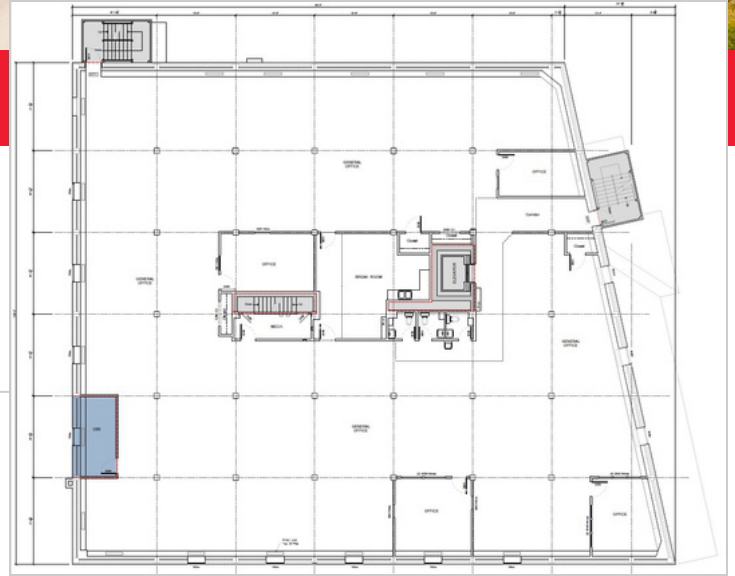
NOW LEASING



📍 MOBERLY, MO

101 W Coates St Third Floor

- 10,750 SF professional office or plug-and-play call center space available within the 45,000 SF O'Keefe Building.
- Building is located in the Depot District of Historic Downtown Moberly, putting it within walking distance of numerous restaurants and shops.
- Space can be subdivided and remodeled to suit exact tenant needs.
- 20% increase in civilian labor force in the last 10 years with major employers contributing to over a 25% increase in daytime population.



- Building equipped with fiber optic hub.
- Tenants also have access to data center hosting services, backup and replication, IT security and more.
- Multi-tenant building secured with a card entry system and elevator pass.



Orscheln Properties Co. L.L.C.
Corey Mehaffy, EVP & General Manager
660-263-1312
info@orschelnproperties.com
orschelnproperties.com



ORSCHELN®
PROPERTIES CO. L.L.C.