

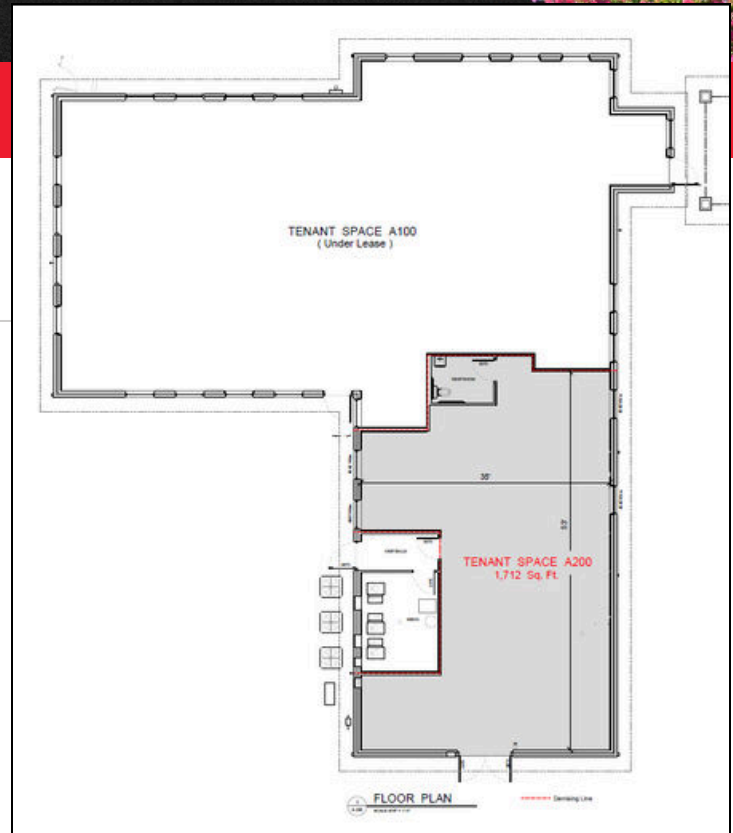
NOW LEASING



 JEFFERSON CITY, MO

1916 Boggs Creek Rd

- 1,700 SF available of 5,500 SF commercial office building conveniently located in Jefferson City, MO near the Eastland Dr exit from Highway 50.
- Available space can be remodeled to suit exact tenant needs.
- Multi-tenant building with shared parking lot.
- Convenient to restaurants and other shopping.
- Landlord's maintenance staff offers preventative maintenance and repair services.
- Tenants also have access to data center hosting services, backup and replication, IT security and more.
- As the state capital, Jefferson City attracts and retains a highly skilled and educated workforce. 32% of Cole County has a bachelor's or higher, and the county boasts a total workforce of 79,000.
- More than 20 different industry sectors make up the economic base of Jefferson City, including government, manufacturing, healthcare, finance, hospitality and education.



Orscheln Properties Co. L.L.C.
Corey Mehaffy, EVP & General Manager
660-263-1312
info@orschelnproperties.com
orschelnproperties.com

ORSCHELN[®]
PROPERTIES CO. L.L.C.